

Our WEPL Year



Willoughby-Eastlake Public Library Year in Review: 2023



Willoughby-Eastlake Public Library

We explore. We discover. We connect.

2023 Revenue

Property Taxes: \$4,969,734.68

PLF: \$2,531,368.81

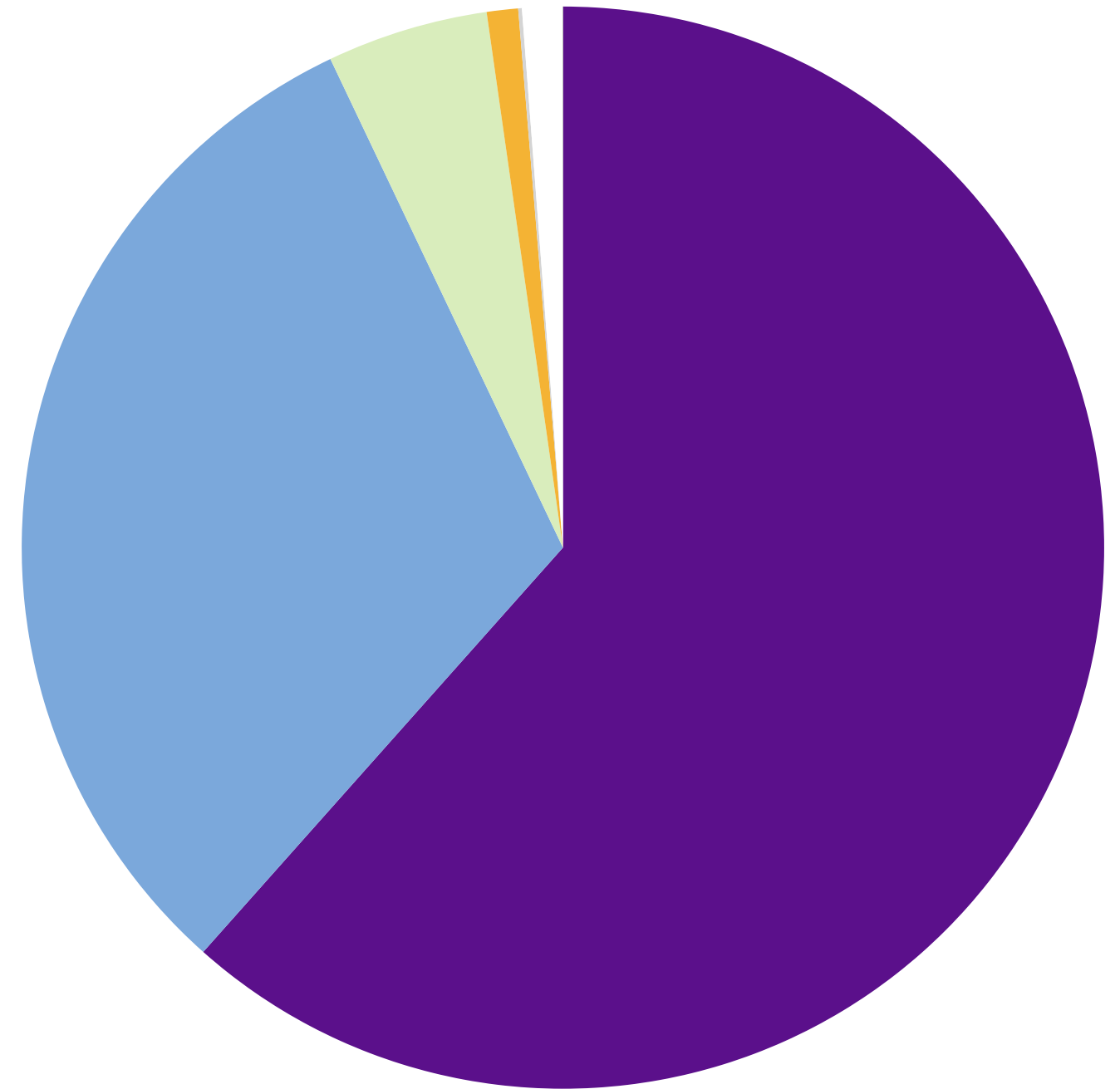
Intergovernmental: \$388,650.24

Fines and Fees: \$75,430.99

Miscellaneous: \$8,866.37

Interest: \$97,007.63

Donations: \$585.00





Willoughby-Eastlake Public Library

We explore. We discover. We connect.

2023 Expenses

Library Personnel: \$4,137,192.12

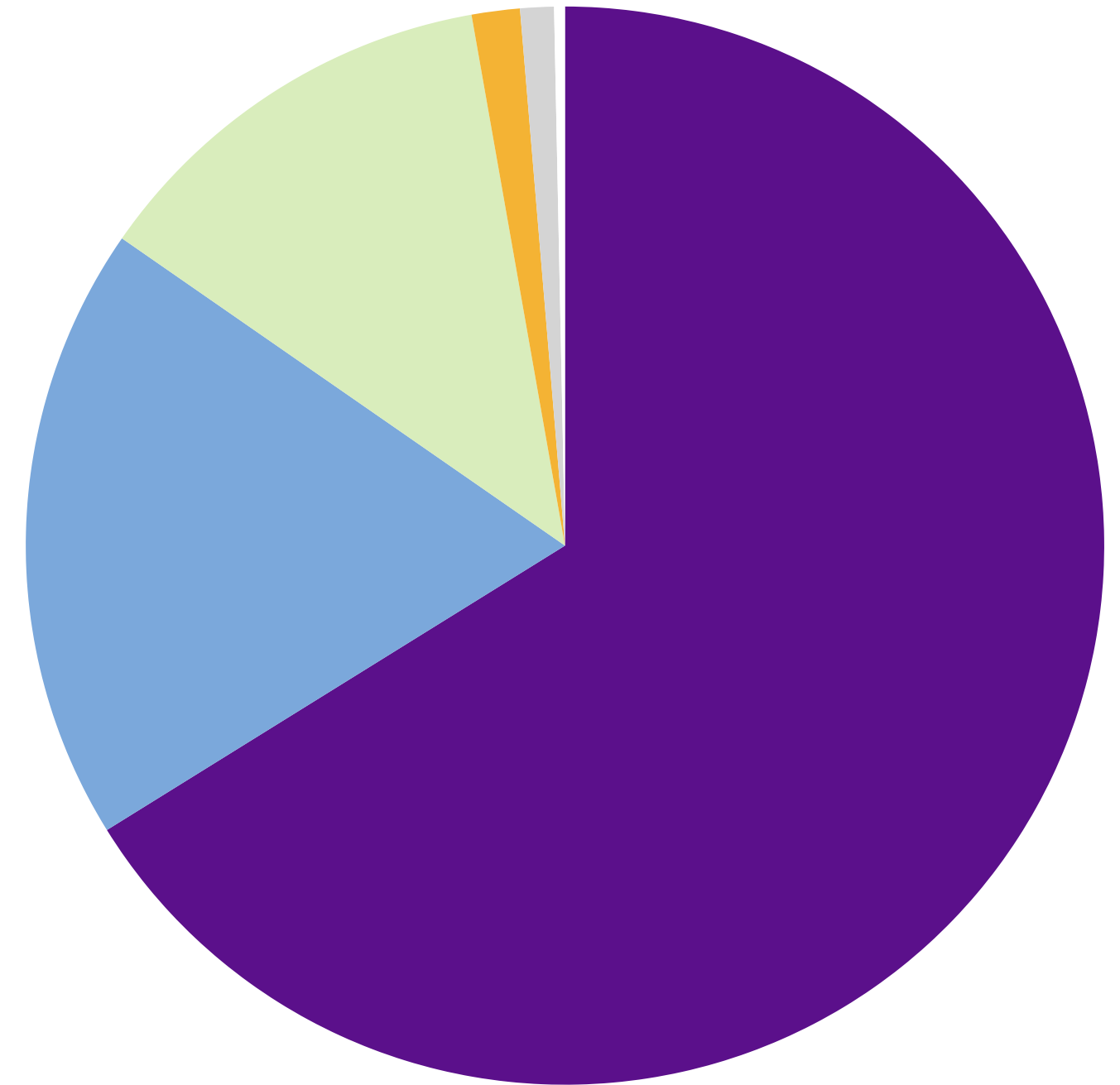
Library Materials: \$1,156,713.52

Purchased Services: \$786,282.78

Capital Outlay: \$90,249.13

Supplies: \$63,002.43

Other: \$20,276.33





Capital Improvement Projects

Building Improvements:

Eastlake Refresh: \$1,794,502.76

Furniture & Equipment: \$209,398.41

Professional Services:

Eastlake Refresh: \$19,942.79

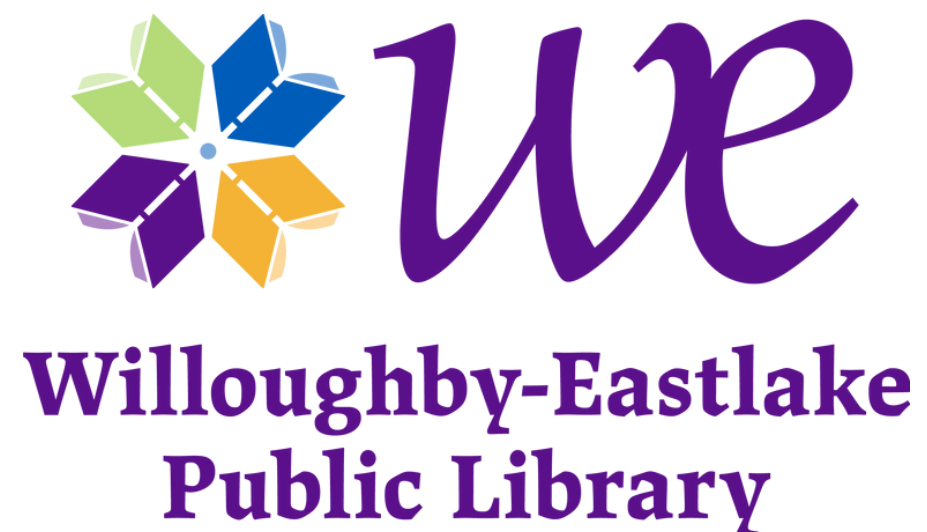
Willowick Air Handler: \$3,583.25

We cracked a million again for the first time since 2019!

Total Items Circulated: 1,014,613 (↑ 27%)

Stats are boring...

...Unless they're our stats!



We saw nearly 30,000 people at our programs and storytimes!

Children's Program Attendance: 14,112

Teen Program Attendance: 1,780

Adult Program Attendance: 7,244

Storytime Attendance: 6,185

Total: 29, 321 (↑ 40%)



Summer Reading Participants: 1,720 (↑ 16%)



“

I used this service this past week. It was easy to use and the research librarian was so incredibly helpful and friendly. We are so fortunate to have a wonderful library and staff.

Kevin B. on Self-Serve Faxing

I was able to walk there with my dog to pick up my book outside! Such a great addition to the library!

WEPL Patron, on Lockers

Here are even more ways that we have helped our community!

Meeting Room Usage: 1,959 (↑ 57%)

Public Computer Use (sessions): 38,955 (↑ 35%)

Database Searches: 112,097 (↑ 41%)

Reference Assistance Transactions: 60,231 (↑ 26%)

Passports Processed: 909 (↑ 23%)

We served over **900** lunches in our
new Summer Lunch Program!



**Willoughby-Eastlake
Public Library**

We explore. We discover. We connect.



**I always read library books
but when I became
handicapped, I was afraid I
would miss them. I found out
from one of your employees
that I could still borrow books
on my laptop. She told me
how and now I can still read
any book I want online, and I
love it. Thank you.**

Pat D.

**Your Adult Beanstack Reading
Challenges are simply the
best. Thank you, Willoughby
Eastlake Public Library, for
this service. Keep up the great
work!**

Joyce S.

Community Outreach Partners



Asa's Angels

Breckenridge Village/Ohio Living

Cleveland Seed Bank

Forbes House

GFWC Ohio Eastlake Women's Club

Greater Cleveland Food Bank

Here We Grow Again

Itsy Bitsy Land

Kennedy Preschool

Kid Friendly Academy

Lake County Board of Developmental

Disabilities/Deepwood

Lake County Council on Aging

Lake County General Health District

Lakeland Community College TLC

Little Learners II

Little Scholars

North Coast Lions

**Papillion Enrichment Center
PCs for People
Project Noelle
Shoregate United Methodist
Special Olympics
St. Mary's Head Start
The Heart of Willoughby
United Way of Lake County
University Hospitals (Lake West)
Willoughby Arts Collaborative
Willoughby Historical Society
Willoughby Parks & Recreation
Willoughby Senior Center
Willoughby United Methodist
Preschoolers
Willoughby Western Lake County
Chamber of Commerce
Willoughby-Eastlake Schools
Willowick Food Pantry
Willowick Senior Center**





"We use the Eastlake branch most frequently but appreciate your staff at all locations. The on-line service is great, and especially during covid, using e-books has been easy and entertaining. THANK YOU to everyone."
- Curt K.



"Thank you for all you do! Everyone at the front desk is kind and friendly!"
- Patti B

"I've been coming to the Willoughby Library since 2009 and throughout those years the Staff has always been Fantastic! Who needs cable or satellite when the library has such a phenomenal selection of DVDs and Blu-ray discs to choose from?!" - Christopher J.

"What I love about the Willowick library: I can put books on hold and then pick them up when they come in; there are so many interesting events scheduled for adults to enjoy; and the friendly staff. Thanks for being my library." - Gail N



"Our Willoughby-Eastlake Library System is a treasure in our community. From its collections to programs to its many services, it is welcoming, teaching, and informative to all its users. All this, with amazing front line service staff, Reference librarians and Technical Services; it is the heartbeat of the community. How lucky we all are to have this treasure!"
- Kathy F.



This is a small sample of the Library Lovers' Month Responses from 2023!

Two Successful Book Sales in 2023

Combined Sales: \$7,144.00

\$3,152.00 in funding for 12 library programs that attracted hundreds of patrons

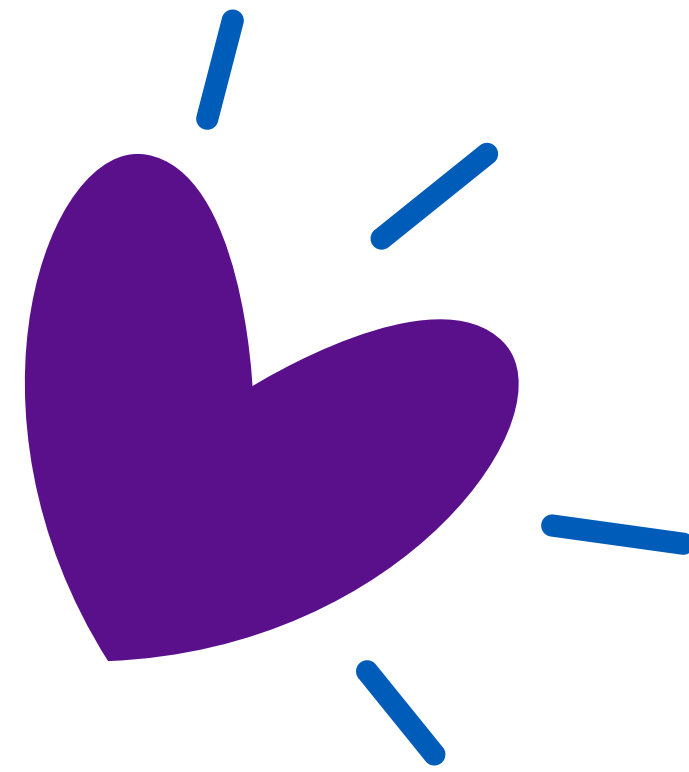
\$2,810.00 in wish list funds for equipment at all WEPL buildings including but not limited to:

- **New Scanner**
- **Embroidery Machine**
- **Projector**
- **Sign Boards**

Thank you, Board President Karen Fraley and Boosters!!



**Thank
You**



Thank you, our community, for a wonderful 2023!
Here's to an even better 2024!



we

**Willoughby-Eastlake
Public Library**

We explore. We discover. We connect.